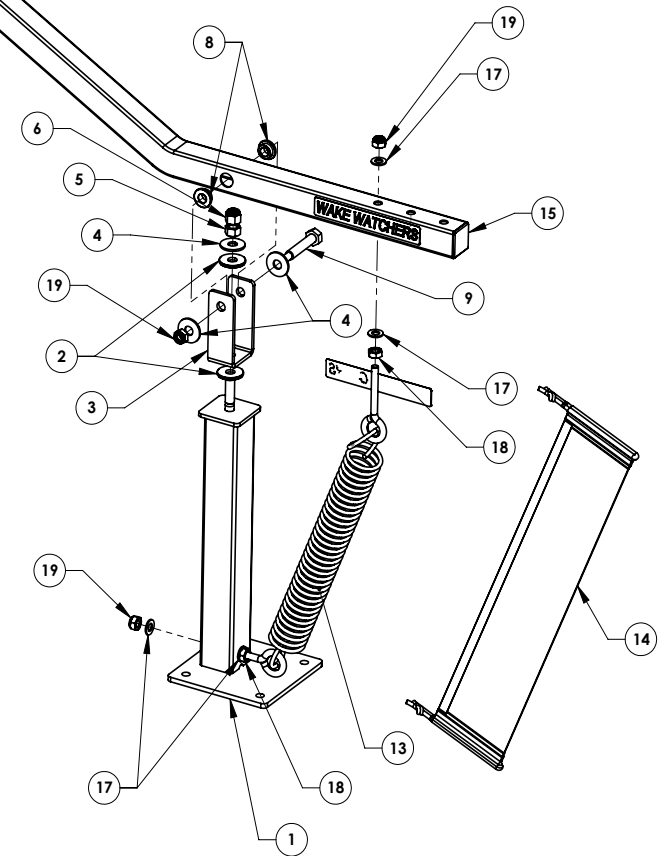
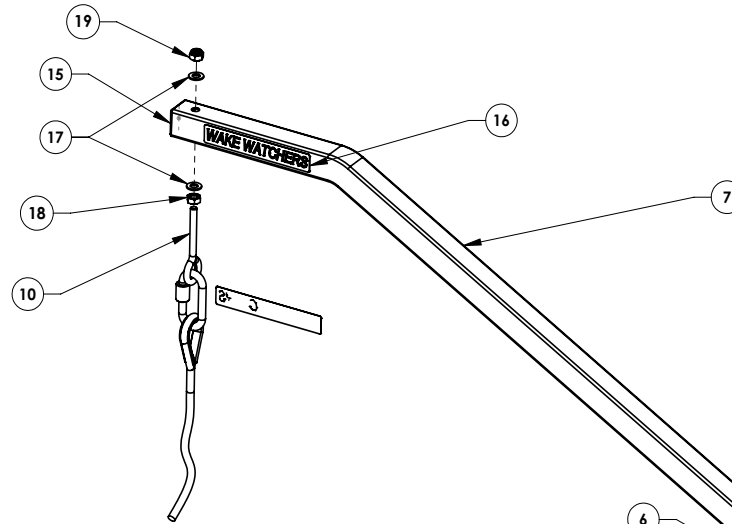


Wake Watcher™

Complete Parts List

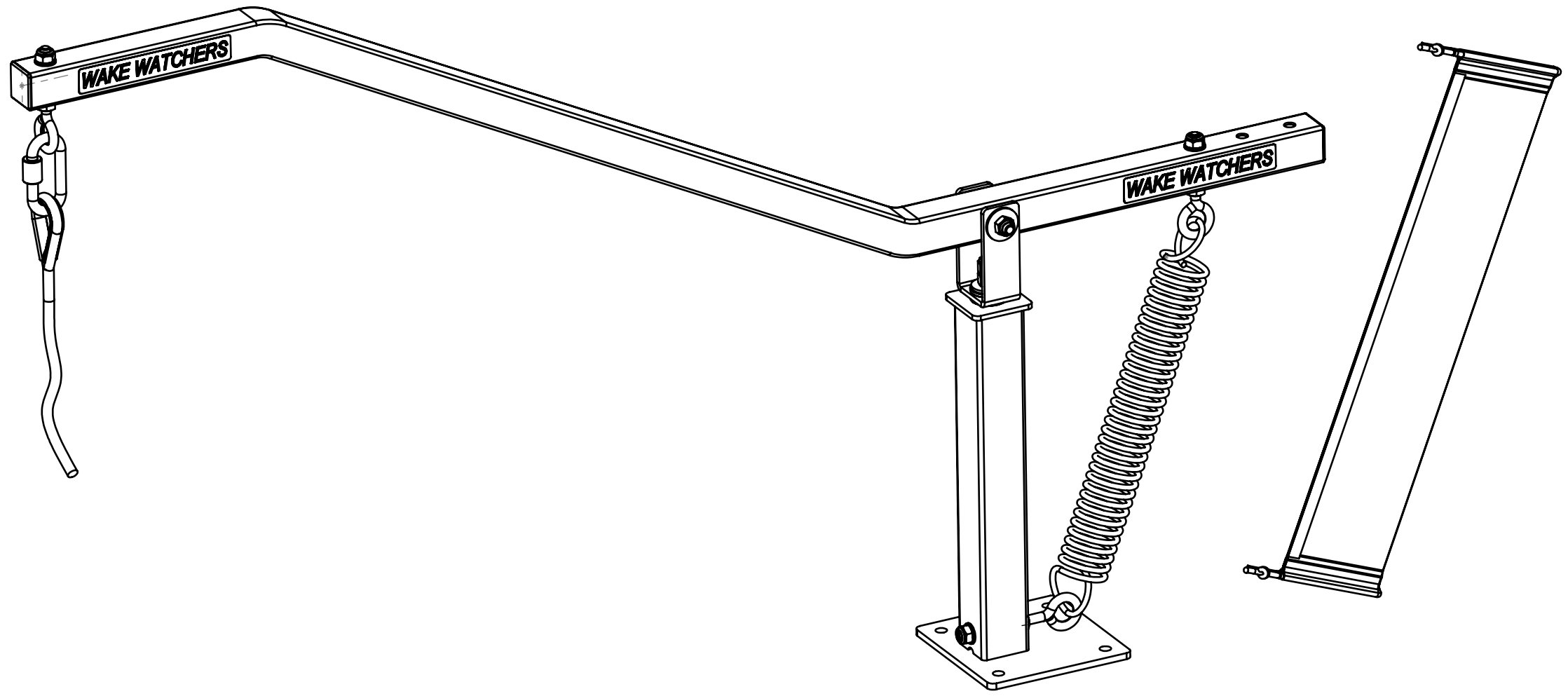


| ITEM NO. | PART NUMBER | DESCRIPTION | QTY. |
|----------|-------------|--|------|
| 1 | WWMS-SA1 | BASE SUBASSEMBLY WELDMENT | 1 |
| 2 | WWMS-P3 | WASHER, THRUST BEARING: ID 0.49"[12.3mm], OD 1.4"[35mm], X 0.125"[3.2mm] THK | 2 |
| 3 | WWMS-P2 | U-BRACKET | 1 |
| 4 | WWMS-P9 | WASHER 1: ID 0.57"[14.5mm], OD 1.30"[33mm] X 0.098"[2.5mm] THK STAINLESS STEEL | 3 |
| 5 | WWMS-P7 | NUT 1: M12, PITCH 1.75 X 0.390"[10mm] THK, HEX NUT, STAINLESS STEEL | 1 |
| 6 | WWMS-P11 | NUT 2: M12, PITCH 1.75 X 0.470"[12mm] THK, NYLON INSERT HEX LOCKNUT, STAINLESS STEEL | 1 |
| 7 | WWMS-P10-1 | ARM: 38X38mm] X 14 GAUGE 2.0mm WALL HSS. LENGTH: 1473mm | 1 |
| 8 | WWMS-P8 | BUSHING FLANGED: ID 0.482"[12.2mm], OD 0.750"[19.1mm], FLANGE O.D. 1"[25.5mm], MATERIAL: "OILITE" BRONZE. | 2 |
| 9 | WWMS-P6 | SHOULDER BOLT: M10, HEX CAP, PITCH 1.5mm, STAINLESS STEEL, LENGTH: 2.950"[75mm], SHOULDER LENGTH: 2.360"[60mm] | 1 |
| 10 | WWMS-SA12 | ROPE SUBASSEMBLY | 1 |
| 13 | WWMS-P16-1A | SPRING ASSEMBLY | 1 |
| 14 | WWMS-SA17 | SPRING SAFETY SLEEVE SUBASSY | 1 |
| 15 | WWMS-P10-3 | PLASTIC END CAP: TO FIT INSIDE 1-1/2"X1-1/2"[38X38mm] SQUARE TUBE WITH WALL THICKNESS: 0.089"[2.3mm] | 2 |
| 16 | WWMS-P10-2 | REFLECTIVE LABEL: "WAKE WATCHERS" (PRODUCT DECAL) | 4 |
| 17 | WWMS-P26 | WASHER 2: I.D. 0.416"[10.5mm], O.D. 0.783"[20mm] X 0.072"[1.8mm] THK, S.STEEL | 6 |
| 18 | WWMS-P24 | NUT 3: M10, PITCH 1.5mm X 0.300"[6.5mm] THK HEX NUT, STAINLESS STEEL | 3 |
| 19 | WWMS-P42 | NUT 4: M10, PITCH 1.5mm X 0.390"[10mm] THK, NYLON INSERT HEX LOCKNUT, STAINLESS STEEL | 4 |

8 7 6 5 4 3 2 1

D
C
B
A

D
C
B
A



| | | | | | | | | | | |
|--|-----------------------|--|-----------------|--|------|-----------------|-----|----------|----------------|-----------|
| 00 | | | X | | | | | | | |
| REV | REVISIONS DESCRIPTION | | CHK | ENG APPR. DATE: | | | | | | |
| <p>THE INFORMATION CONTAINED IN THIS DRAWING IS THE SOLE PROPERTY OF BEAR INDUSTRIES INC. ANY REPRODUCTION IN PART OR AS A WHOLE WITHOUT THE WRITTEN PERMISSION OF BEAR INDUSTRIES INC. IS PROHIBITED.</p> | | <h1>BEAR INDUSTRIES INC.</h1> | | | | | | | | |
| <p>DIMENSIONS ARE IN INCHES UNLESS SPECIFIED OTHERWISE. [DIMENSIONS IN BRACKETS ARE IN MILLIMETERS].</p> <p>TOLERANCES: FRACTIONS: $\pm 1/16"$ ANGLES: $\pm 0.5^\circ$</p> <p>DECIMALS: .X = $\pm .1/$.XX = $\pm .02/$.XXX = $\pm .005$</p> | | <p>TITLE / PART DESCRIPTION: WAKE WATCHER SERVICE PARTS</p> | | | | | | | | |
| DO NOT SCALE DRAWING | SCALE: NTS | SHEET 1 OF 2 | DATE: JUN/07/04 | <table border="1"> <tr> <td>SIZE</td> <td>DWG. / PART NO.</td> <td>REV</td> </tr> <tr> <td>B</td> <td>WWSP-R6</td> <td>00</td> </tr> </table> | SIZE | DWG. / PART NO. | REV | B | WWSP-R6 | 00 |
| SIZE | DWG. / PART NO. | REV | | | | | | | | |
| B | WWSP-R6 | 00 | | | | | | | | |

8 7 6 5 4 3 2 1